

Optic-well



Precision Sapphire Components

www.optic-well.com

TABLE OF CONTENT



About Us	04
Our Ability	07
Quality Assurance	17
Products Show	26
Contact Us	28



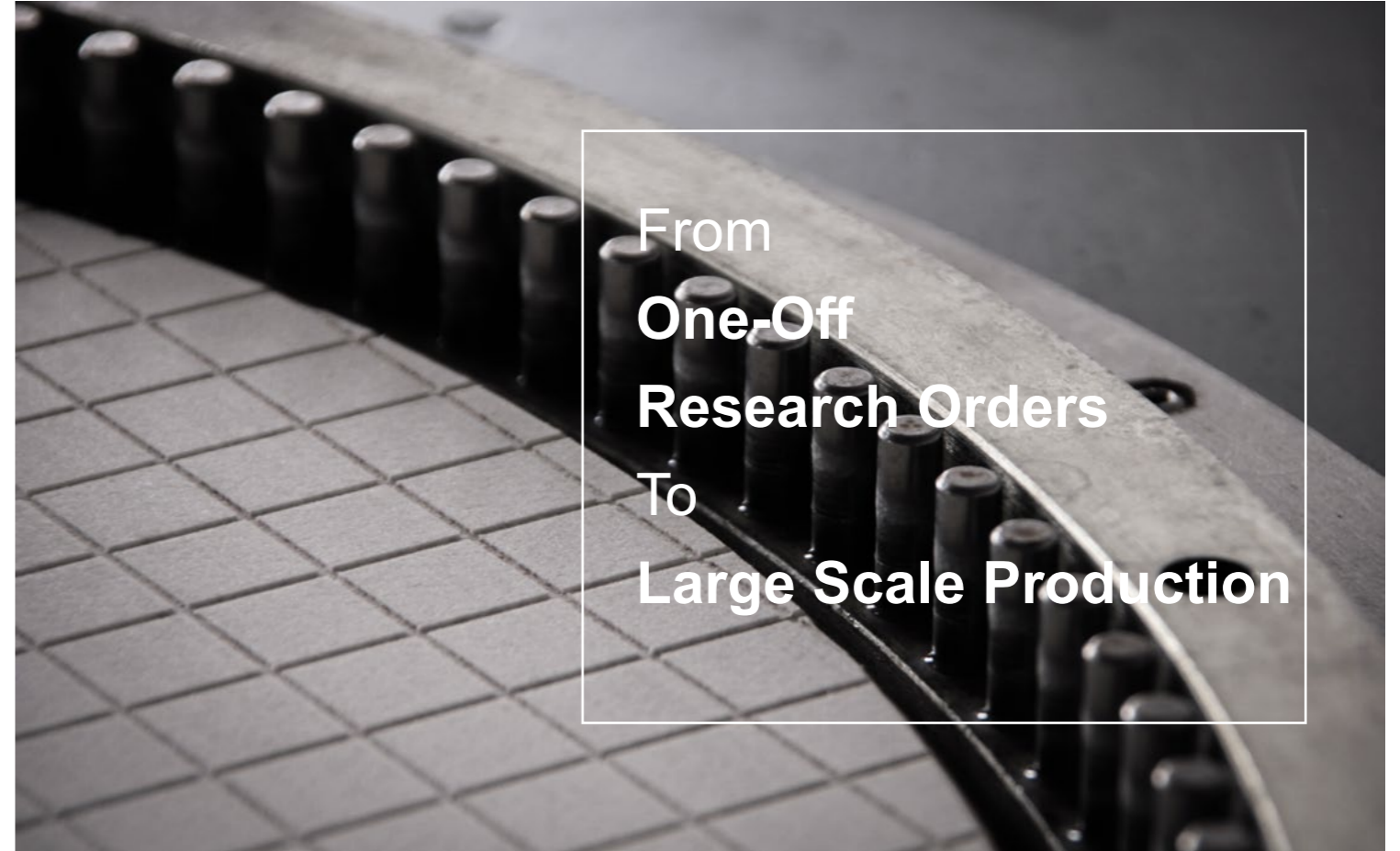
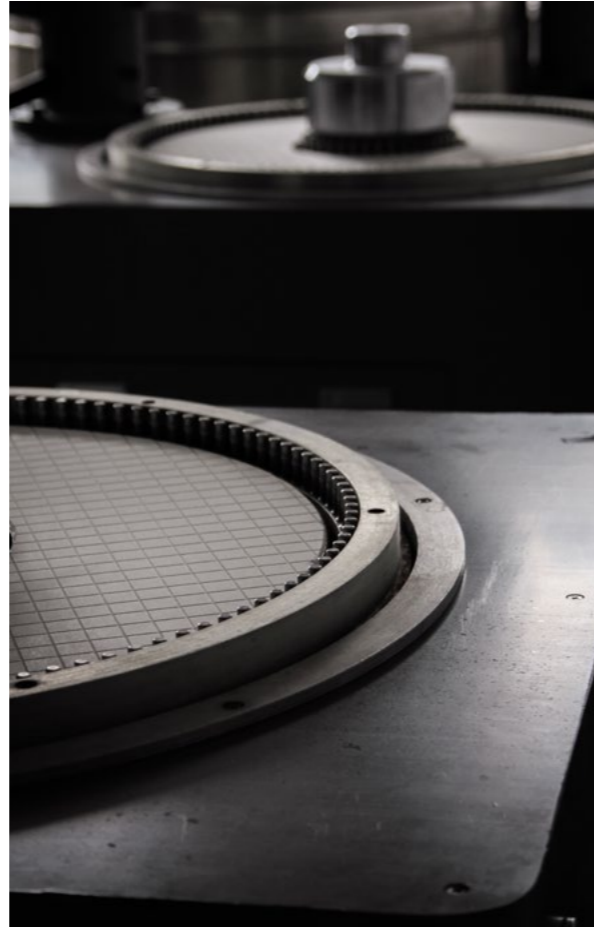
ABOUT US



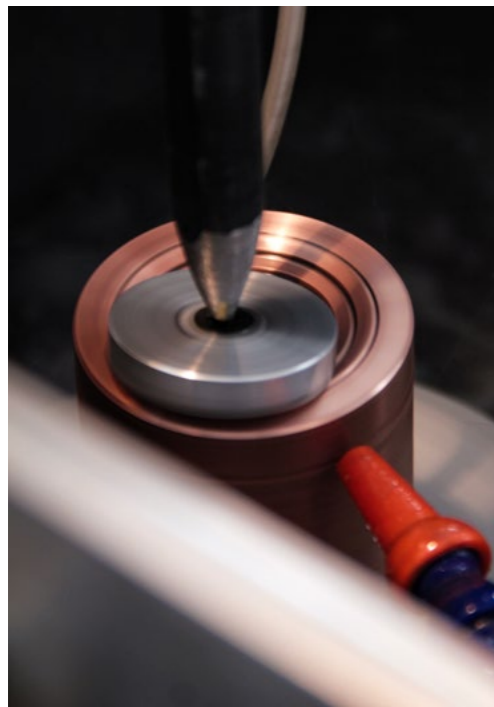
OPTIC-WELL OPTICS is an advanced Optical components processing company. Since its inception, the company has been involved in the design, research and development of precision optical components. Our main products included Precision Optical window, Prism, Lenses, rods, tubes and Various Optical components for IPL beauty machines.

With our expanding international network, we can satisfy any customer requirements and be responsive to your exact needs before and after delivery. Our commitment is to consistently provide you with high quality products and services designed to your exact specifications delivered on time at a competitive price.

Thank you for considering our company.



ABOUT US



WHY US?

20 years' experiences on sapphire

Our team have over 20 years experiences on handdling sapphire, we are good at this job!

Professional package

At Optic-Well Optics we go to great lengths to ensure your optics reach you in the best possible condition.

Fast delivery

We understand that our customers have their own schedules and delays are unacceptable. To this end we work hard to ensure your optics arrive on time and in one piece.

Competitive price

Here you can find the best the balance between price and the quality!

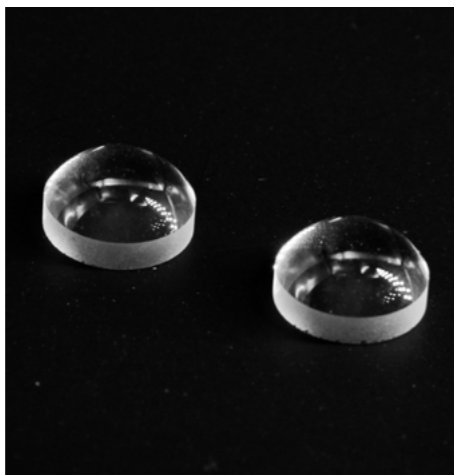


The Supplier Of
Sapphire Components
You Can Trust!

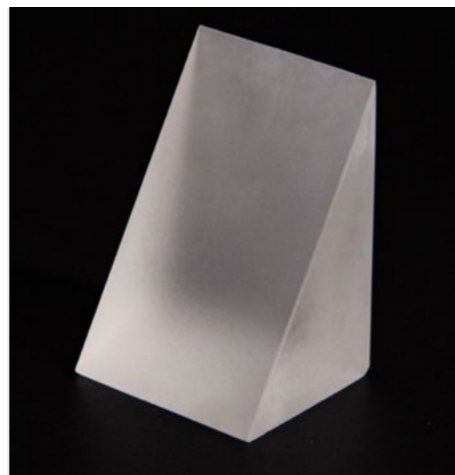
OUR ABILITY



SAPPHIRE WINDOWS



SAPPHIRE LENSES



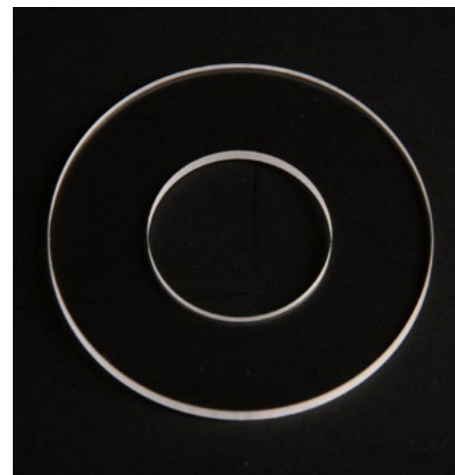
SAPPHIRE PRISM



LIGHT GUIDES



RODS



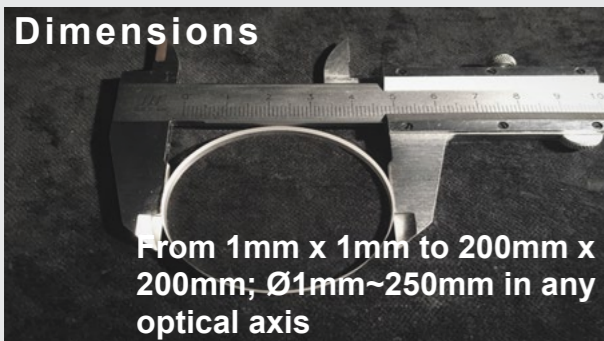
CUSTOM COMPONENTS

OUR ABILITY

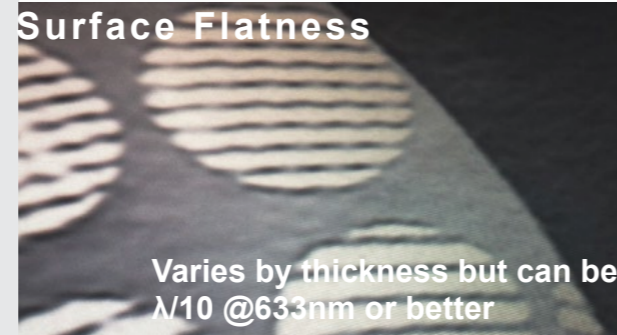


- 1.Sapphire Windows
- 2.Sapphire Lenses
- 3.Sapphire Prism
- 4.Light Guides
- 5.Rods
- 6.Custom Components

Dimensions



From 1mm x 1mm to 200mm x 200mm; \varnothing 1mm~250mm in any optical axis



Surface Flatness

Varies by thickness but can be $\lambda/10$ @633nm or better



Surface Quality

S/D 80/60~20/10 per MIL-PRT-13830

Sapphire Windows

- .Square
- .Circular
- .Ring
- .Wedge
- .Brewster



Specification:

- 1.Size: From \varnothing 1mm~ \varnothing 250mm
- 2.Tolerance: 0.005~0.10
- 3.Thickness: 0.05mm~150.00mm

Materials:

Sapphire; Bk7; Quartz ETC...

- 4.Surface Quality: S/D 80/50~S/D 10/5
- 5.Surface Flatness: $8\lambda \sim \lambda/10$ @633nm
- 6.Clear Aperture: >95%

Sapphire Lenses

- .Plano-Concave
- .Plano-Convex
- .Convex-Concave
- .Bi-Convex
- .Bi-Concave



Specification:

- 1.Size: From \varnothing 10mm~ \varnothing 250mm
- 2.Tolerance: 0.005~0.10
- 3.Thickness: 0.05mm~150.00mm

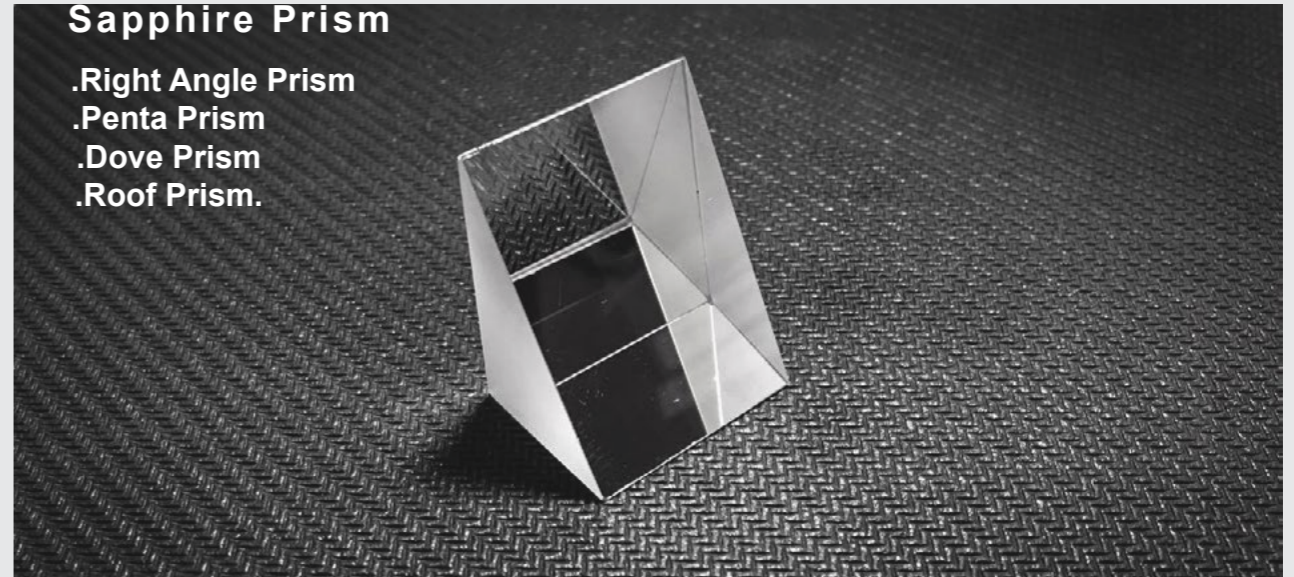
Materials:

Sapphire; Bk7; Quartz ETC...

- 4.Surface Quality: S/D 80/50~S/D 20/10
- 5.Surface Flatness: $8\lambda \sim \lambda/10@633\text{nm}$
- 6.Clear Aperture: >95%

Sapphire Prism

- .Right Angle Prism
- .Penta Prism
- .Dove Prism
- .Roof Prism.



Specification:

- 1.Size: From 5mm~250mm
- 2.Tolerance: 0.005~0.10
- 3.Thickness: 0.05mm~150.00mm

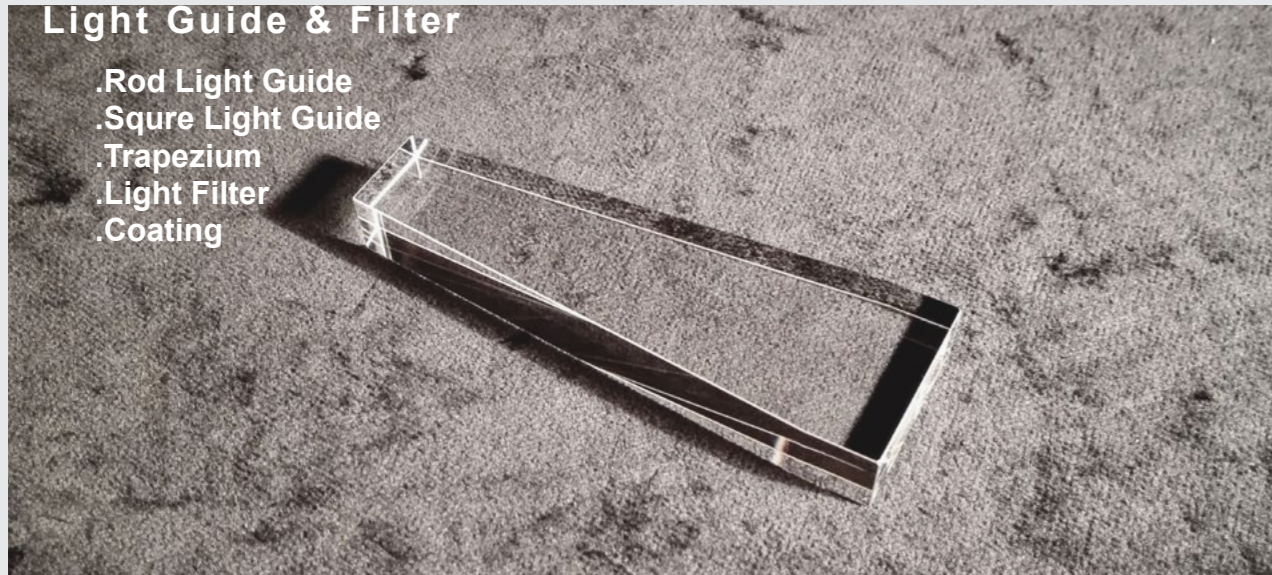
Materials:

Sapphire; Bk7; Quartz ETC...

- 4.Surface Quality: S/D 80/50~S/D 20/10
- 5.Surface Flatness: $8\lambda \sim \lambda/10@633\text{nm}$
- 6.Clear Aperture: >95%

Light Guide & Filter

- .Rod Light Guide
- .Square Light Guide
- .Trapezium
- .Light Filter
- .Coating



Specification:

- 1.Size: From 5mm~250mm
- 2.Tolerance: 0.005~0.10
- 3.Thickness: 0.05mm~150.00mm

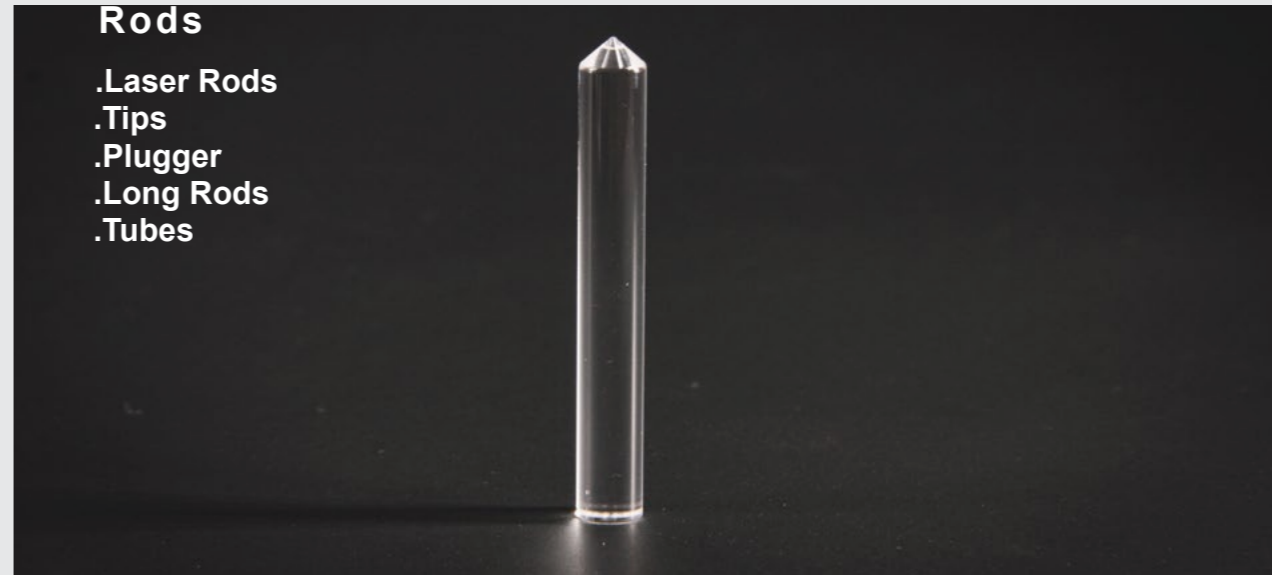
Materials:

Sapphire; Bk7; Quartz ETC...

- 4.Surface Quality: S/D 80/50~S/D 20/10
- 5.Surface Flatness: $8\lambda \sim \lambda/10@633\text{nm}$
- 6.Clear Aperture: >95%

Rods

- .Laser Rods
- .Tips
- .Plunger
- .Long Rods
- .Tubes



Specification:

- 1.Size: From $\text{Ø}1\text{mm} \sim \text{Ø}250\text{mm}$
- 2.Tolerance: 0.005~0.10
- 3.Length: 2mm~150.00mm

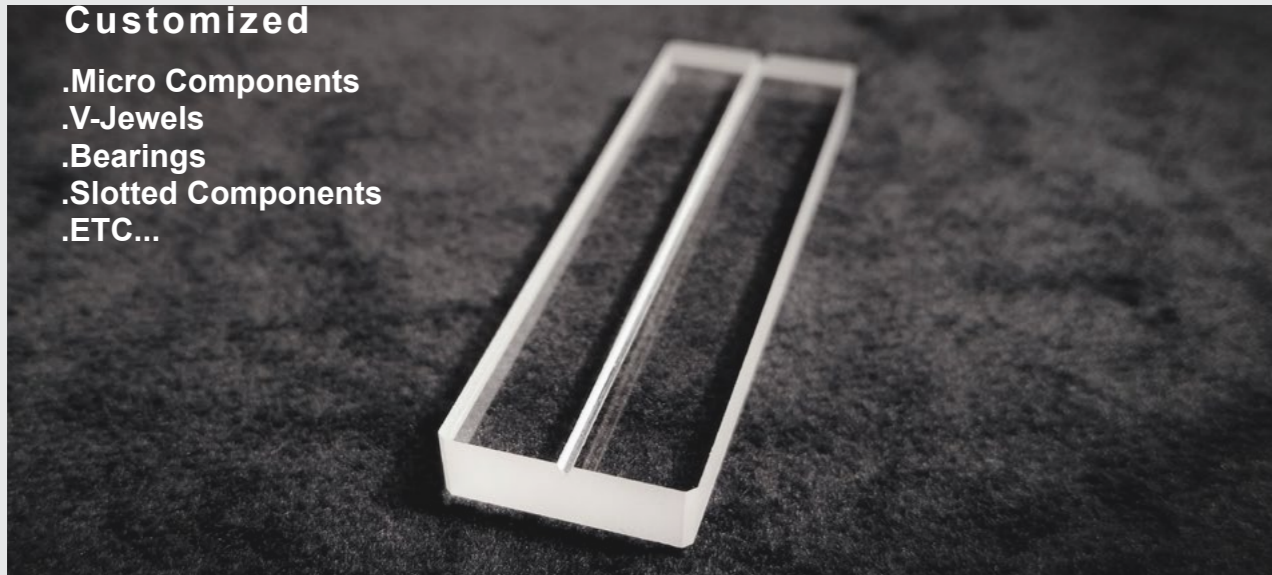
Materials:

Sapphire; Bk7; Quartz ETC...

- 4.Surface Quality: S/D 80/50~S/D 20/10
- 5.Cylinder Surface: Polished or Ground
- 6.Clear Aperture: >80%

Customized

- .Micro Components
- .V-Jewels
- .Bearings
- .Slotted Components
- .ETC...



Specification:

- 1.Size: From $\varnothing 0.5\text{mm}$ ~ $\varnothing 250\text{mm}$
- 2.Tolerance: 0.005~0.10
- 3.Thickness: 0.05mm~150.00mm

Materials:

Sapphire; Bk7; Quartz ETC...

- 4.Surface Quality: S/D 80/50~S/D 20/10
- 5.Surface Flatness: $8\lambda \sim \lambda/10@633\text{nm}$
- 6.Clear Aperture: >95%



QUALITY ASSURANCE



VISUAL



CLEANING



PACKAGING
&
SHIPPING



QUALITY ASSURANCE



VISUAL CHECK



Once our optical parts have been tested in our metrology laboratory they are taken to our Inspection room to be visually measured against our MIL-RF-13830 and MIL-M-13508 compliant scratch/dig masters. Broad surface quality requirements are checked against a black background using a 60W lamp. Tighter specifications will always be tested under an illuminated microscope or our Starrett video imaging system with its x12 zoom allowing us to detect blemishes as small as 0.001mm. In addition to scratch/dig requirements, parts are additionally checked for sleeks and other material imperfections that might compromise the quality of the optic.

All of our parts are 100% QA checked by our experienced optical inspection team to ensure they are free from surface imperfections that could affect the operating effectiveness. Our staff undergo regular training to comply to our strict ISO standards. We work closely with our customers to establish procedures to best work with their supply chain.



QUALITY ASSURANCE



CLEANING



At Optic-Well Optics we take great care is always taken when cleaning optical components. The wrong cleaning solution can damage a delicate optic or coating and our ISO certified staff are supervised by our management team to ensure the correct technique is applied. The part is checked against a black background and a 60W lamp to ensure no dust or debris is on the surface. For small optics or products with very stringent cleaning requirements we will clean the part under an illuminated microscope to ensure the best possible results

We understand that any process that involves contact with the optic always runs the risk of damaging it.

With this in mind we will never clean an optic more than necessary and will always attempt to minimise handling throughout the process.



QUALITY ASSURANCE



PACKAGING & SHIPPING

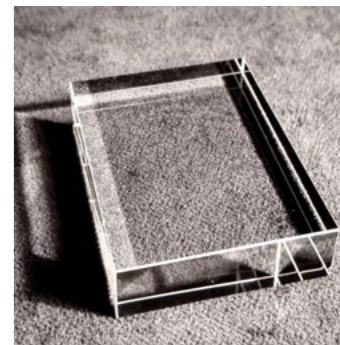
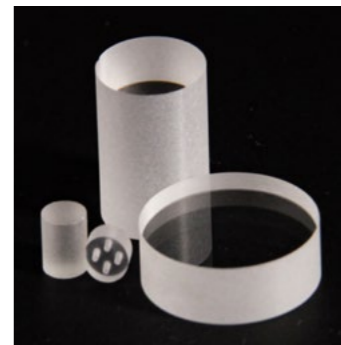
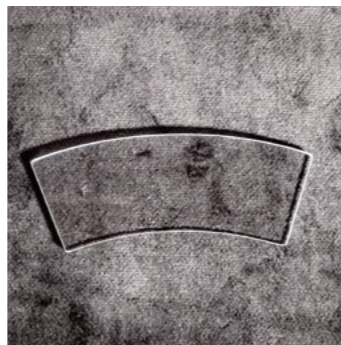
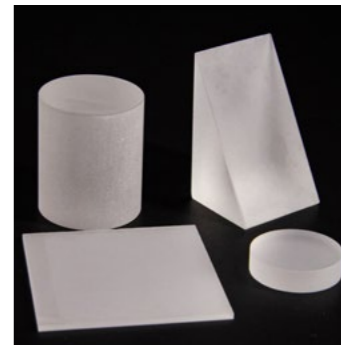
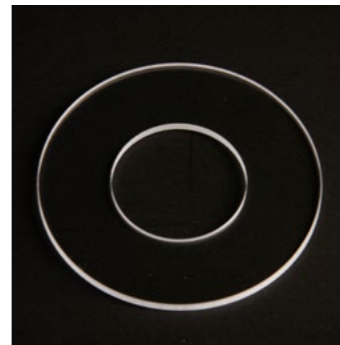
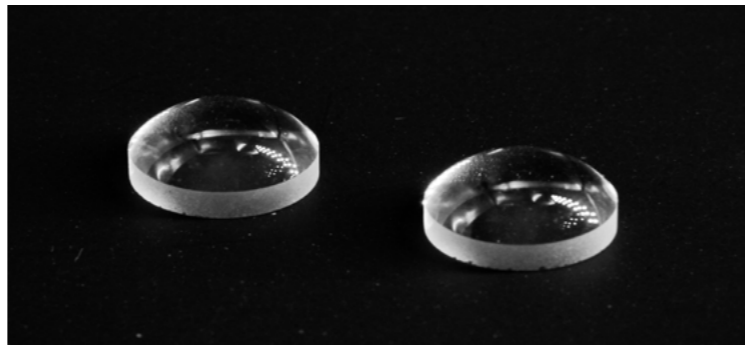
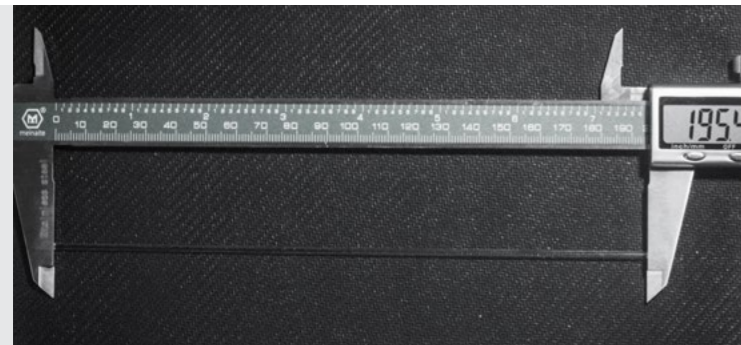


Optical Components are fragile and poor packaging can lead to damage during the delivery process. At Optic-Well Optics we go to great lengths to ensure your optics reach you in the best possible condition. Our QA staff follow stringent procedures when packing our products. All packing is monitored with full traceability to ensure any issues are quickly addressed.

Optic-Well are proud to have an excellent working relationship with major logistic companies to ensure you get the best possible price and delivery time for your optics. We understand that our customers have their own schedules and delays are unacceptable. To this end we work hard to ensure your optics arrive on time and in one piece.



PRODUCTS SHOW



Optic-well



Precision Sapphire Components

Email. william.guo@optic-well.com

Phone:+086 130 4890 3326